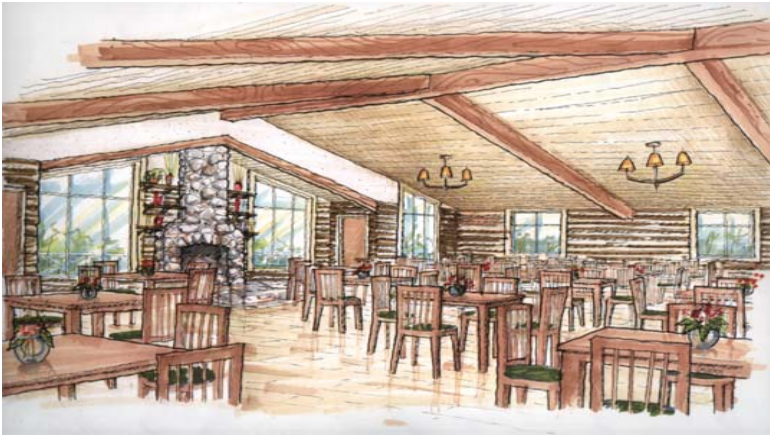


# Camp LuWiSoMo Dining Hall and Retreat Lodging Campaign



*Camp LuWiSoMo is  
dedicated to providing  
faith-growing  
opportunities in a Christ-  
centered outdoor ministry  
setting for all ages to  
refresh the whole person  
through the blessings of  
people, facilities, and  
God's Word.*



# **A Message from Honorary Chair** *President John C. Wille*

“Camp Lu-WiSoMo is a blessing to all who know it. From young children through adult, from a weekend camping getaway to a confirmation retreat, Camp Lu-WiSoMo is an integral part of our South Wisconsin District.



“With expansion plans for the New Retreat Center and a new Dining Hall the camp’s ministry and service can only improve.

“But for that to happen, our Lord’s blessing and your response is vital. I would ask that you remember this important ministry with a generous offering so that this outdoor ministry can provide even better service to our Lord’s church than it has in the past.

May our Lord continue to bless Camp Lu-WiSoMo. May our Lord make the vision of what this Camp can be a reality for all God’s people to enjoy!”



**A Message from**  
*Past President Ron Meyer*

“L u W i S o M o brings to all who take advantage—a wonderful “Outdoor Ministry” experience. This Camp blesses in very special ways the Gospel ministry of our South Wisconsin District and those blessings can only be enhanced with the proposed Dining Hall and New Retreat Center as we are better resourced to touch many more lives.



“Please prayerfully consider and then bring a generous offering to your Lord and this part of His ministry in order that these much needed additions become a reality. May our gracious and generous God continue to bless you and make you a blessing for others.”

The present dining hall is too small to accommodate the 200 people on camp during the summer. It can only seat half the campers.

The Chapel of St. Barnabas accommodates 335 people. A new dining hall could accommodate wedding receptions and conferences.



# Opening Remarks by Campaign Congregational Chairman

*Rev. Bryan O'Connor*

“Greetings in the name of our Savior whose name we proclaim as the way, the truth, and the Life!



“I hope that you will join in my excitement over the goal of Feeding His Flock, the capital campaign for the South Wisconsin District’s Camp LuWiSoMo.

*Rev. Bryan O'Connor*



“The camp has fed His flock body, soul, and spirit for nearly 40 years. Now it is time to take an exciting challenging step forward in the ministries we are able to provide at the Camp.



“We need to build a dining/meeting facility that will feed and nurture an entirely new generation of campers.

“We are asking you to be a partner in this exciting step forward for Camp LuWiSoMo and its Outdoor Ministry to God’s people of the South Wisconsin District.



“Please read this brochure, talk to others in your family and congregation about your commitment to Camp LuWiSoMo, pray about God’s blessing to you through LuWiSoMo, and ask God’s guidance as you consider your response to Feeding His Flock campaign.

“Thank you for your past support of Camp LuWiSoMo and for joining us in Feeding His Flock. We believe firmly that God answers prayers, therefore we will be praying for you as you seek His will in this matter.”



**Insights from  
Campaign Co-Chairpersons  
Carl Brakebush & Art Dee**

“As Co-Chairman of the Feeding His Flock campaign at Camp LuWiSoMo, I have been granted an awesome task. Growing and expanding is exciting and formidable at the same time.



*Carl Brakebush*

“The Outdoor Ministry at Camp LuWiSoMo has affected many people and will continue with God’s blessings to add to our walk with Jesus in our lives for many generations. The amounts of money that are needed for growing and expanding the camp are challenging. If we all work together in His name, we can accomplish many things.

Prayerfully consider the needs here at your camp and God’s plans for this camp will become a reality. I am available to discuss your role at any time. Give God the Glory!”



† † †



*Art Dee*

“I have been on the Camp Board since the 340-acre Round Lake property was just a dream of the Lutheran Laymen’s League. The property was purchased in 1961 with funds from LWML to develop an outdoor ministry for the South

Wisconsin District.”

Camp LuWiSoMo’s spiritual needs have been updated with the beautiful remodeling of the Chapel of St. Barnabas . . .



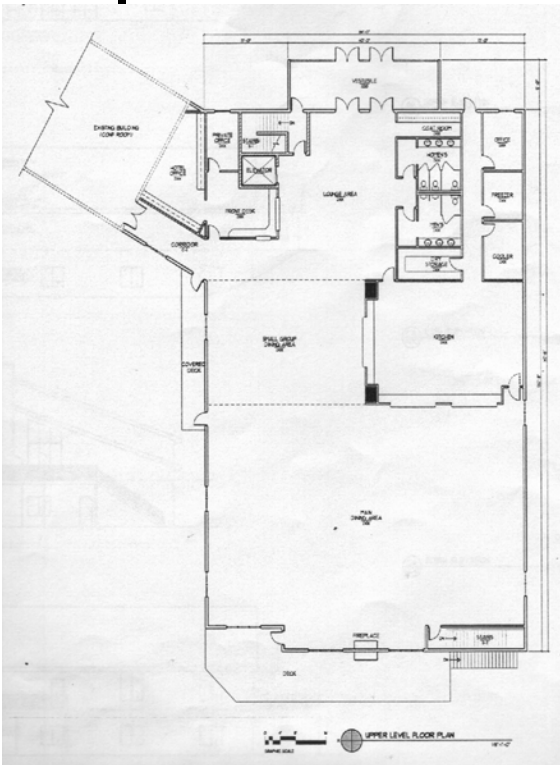
Groundbreaking began in 1988 for the Harvey Krueger Retreat Center. Additional more recent improvements include four tree houses, a picnic shelter, two cabins near worship bowl, a low element challenge course, three family log cabins at the campground, new and expanded water and electric campground sites, a new campground shower house and dump station, and eight youth log cabins.

## Vision . . .

Our total vision includes a 22,250 square foot addition to the Krueger Retreat Center, which will address the challenges that LuWiSoMo currently faces.

The upper level will accommodate 350 people in the main dining hall overlooking Round Lake. An additional room will dine 100 people, allowing two separate groups to simultaneously enjoy meals or one large group of 450.

A spacious kitchen will provide the needed area to prepare and serve delicious meals for large groups.



The lower level will offer 13 family suites. Each suite will have its own bathroom, a king or queen size bed, and additional twin and/or bunk beds. The new addition will provide lodging for up to 78 people.



With the additional accommodations, we will be able to house a group of up to 146 in a single building during any season. All of this lodging will have direct access to the dining hall, accommodating any type of group during any type of weather.

LuWiSoMo will, through the power of the Holy Spirit and God’s inspired Word, be able to change and shape attitudes, values, and behaviors of those youth, college students, husbands and wives, singles, seniors, business people, pastors, teachers, church workers, and staff who participate.

In addition, a few years ago, LuWiSoMo began replacing the old youth cabins with spacious new youth cabins, and three have been completed. With a grant from the SWD, LWML, and with the “Feeding His Flock” campaign, five more log cabins will be built in the spring of 2006, and the shower house will be remodeled.

These updates will help maintain a strong growing summer program, as well as increase opportunities for schools, churches, youth, and families throughout the year.



# Outdoor Ministry



LuWiSoMo provides a “valuable ministry” to the South Wisconsin District with its strengths in the programs that help encourage and develop spiritual growth, and provide a strong Christian witness to campers, staff, and volunteers.



LuWiSoMo's greatest challenge is buildings, specifically, the need to build a larger dining hall to adequately support camp participants and the need to increase the number of family and adult residence units to enable growth of year-round programs.



The goal of the “Feeding His Flock” Capital Campaign is to better equip LuWiSoMo to be a place to proclaim the message of Jesus’ death and resurrection and God’s free gift of forgiveness and salvation to the people who flock to LuWiSoMo each year.



## Rev. Dr. Karl Barth

*Rev. Dr. Karl Barth served as South Wisconsin District President from 1970-1982 and as President of Concordia Seminary from 1982 to 1990.*

“We are truly blessed in the South Wisconsin District to have Camp LuWiSoMo where congregational retreats, circuit meetings, youth activities, and programs for the handicapped are available in a Christ-centered atmosphere. Through the years, many improvements have been made. Now more work is needed to upgrade cabins and dining facilities. May the Lord also bless this latest effort to provide the needed funds.” Rev. Karl L. Barth



### **Camp for All Seasons**

A primary focus of Camp LuWiSoMo has always been its Summer Youth Programs. Summer Servant Events also offer valuable experience for youth.



LuWiSoMo is not just a summer camp, though! Youth have the opportunity to participate in programs throughout the year, including Confirmation Retreats for junior high, Outdoor Education for hands-on out-of-the-classroom learning for elementary students, and Winter Adventure Youth Retreats for junior and senior high.



LuWiSoMo is not just for youth, either! Families have the opportunity to participate in camping activities throughout the year.



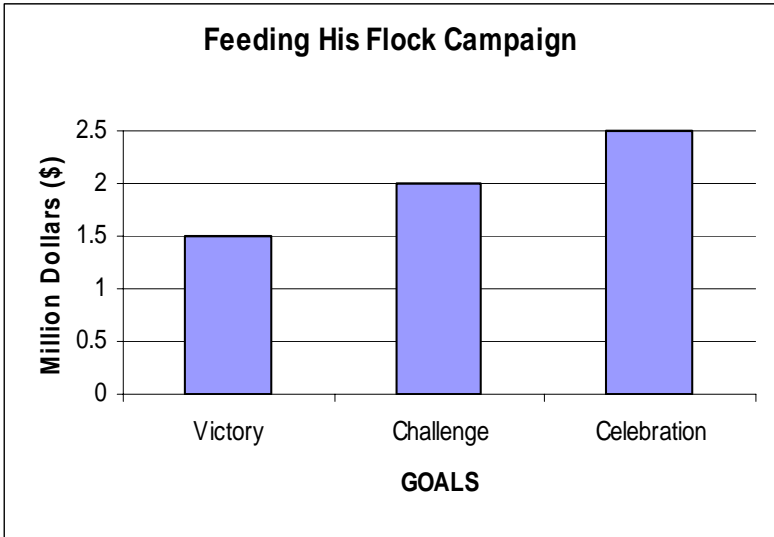
LuWiSoMo offers specially designed programs for campers with developmental disabilities.

Work Weekends offer service opportunities for people of all ages. LuWiSoMo offers Women’s Crafting Retreats and the “Young at Heart” Seniors Retreat and is expanding into other adult retreats.



Statistics affirm that an outdoor ministry such as Camp LuWiSoMo not only impacts the faith of children, but also encourages young people to go into full-time church work.

**Our “Feeding His Flock” Campaign has three goals.**



**Victory Goal** of \$1.5 million—Enables completion of shell, finished dining hall and kitchen, youth cabins and remodeling of shower house.

**Challenge Goal** of \$2 million—Enables completion of family lodging and meeting rooms.

**Celebration Goal** of \$2.5 million—Completion of furnishings and upgrading present Krueger Retreat Center with new carpeting and siding to match the new structure.

## Methods of Making a Gift

1. Cash.
2. Appreciated securities or other forms of investments, stocks, mutual funds.
3. Real Estate.
4. Gift art, antiques, a coin collection, or other valuable assets.
5. Joyful Response (LCEF).

*If you would like assistance planning your gift, contact John Meyer, SWD Gift Planning Coordinator at (414) 464-8100 in the Milwaukee area or (800) 793-3678 outside the Milwaukee area.*



## How can you be our partner?

The third time he said to him, “Simon son of John, do you love me?. . .” He said, “Lord, you know all things; you know that I love you.” Jesus said, “Feed my sheep.” John 21:17



<i>GIFT LEVELS</i> <i>For 3-year campaign</i>		
<b>Gift Type</b>	<b>Monthly</b>	<b>Amount Produced After Three Years</b>
<i>Founder</i>	<i>\$14,000</i>	<i>\$504,000</i>
	<i>\$ 7,000</i>	<i>\$252,000</i>
	<i>\$ 3,000</i>	<i>\$108,000</i>
<i>Leadership</i>	<i>\$ 2,100</i>	<i>\$ 75,600</i>
	<i>\$ 1,400</i>	<i>\$ 50,400</i>
	<i>\$ 700</i>	<i>\$ 25,200</i>
<i>Partnership</i>	<i>\$ 500</i>	<i>\$ 18,000</i>
	<i>\$ 300</i>	<i>\$ 10,800</i>
	<i>\$ 150</i>	<i>\$ 5,400</i>
<i>Sponsorship</i>	<i>\$ 100</i>	<i>\$ 3,600</i>
	<i>\$ 50</i>	<i>\$ 1,800</i>
	<i>\$ 20</i>	<i>\$ 720</i>

# Closing Remarks from Camp LuWiSoMo Executive Director, Kurtis Bueltmann

“I have had the honor and privilege of serving the Lord at Camp LuWiSoMo as the Executive Director for the past decade. My involvement in outdoor ministry began nearly three decades ago, and throughout this time, I have seen firsthand not only the impact outdoor ministry has had on my own life, but also on the lives of my family and many other people.



*Kurtis Bueltmann,  
Executive Director*

“I have seen the eyes light up in a child who suddenly understands the Gospel of Christ. I have witnessed the teenager whose faith is ignited with joy and excitement, resulting in a decision to pursue full-time church work. I have observed the adult who breaks away the busy routine and gains a refocused perspective on their faith relationship with the Lord. I have witnessed the non-Christian friend of a LuWiSoMo



camper open a Bible for the first time and read about God’s gift of forgiveness through the death and resurrection of Jesus Christ.

“Although the family and the church remain the most significant context to nurture and revitalize faith, statistics show outdoor ministry is an important supplement to the efforts of the family and the church. According to two separate studies, the top four “most significant religious influences” on youth are Mother, Father, Pastor, and Church Camp. Another study discovered that experience at a Christian Camp was the number four influencing factor in youth going into full-time church work.

“The “Feeding His Flock” Capital Campaign is not so much about buildings as it is about people. Please join with us as the Lord’s ministry here at LuWiSoMo continues to grow. Your partnership with “Feeding His Flock” is an opportunity to impact more lives with the Gospel of Christ, for it is the power of God unto salvation for everyone who believes!”



This is truly a life-changing ministry, and *you* can be a part of it! You can:

- *Pray for LuWiSoMo daily, and pray for the success of the “Feeding His Flock” campaign.*
- *Learn about LuWiSoMo.*
- *Consider becoming a partner by sacrificially planning and giving a three-year gift to our “Feeding His Flock” campaign.*
- *Enthusiastically share the vision with others and invite them to be a part of this “Feeding His Flock” campaign.*
- *Pray that our mission continues to be blessed.*



Camp LuWiSoMo  
South Wisconsin District of the Lutheran Church-Missouri Synod  
W5421 Aspen Rd  
Wild Rose WI 54984-9177  
Phone: 920-622-3350  
Fax: 920-622-4960  
Email: [camp@luwisomo.org](mailto:camp@luwisomo.org)  
Website: [www.luwisomo.org](http://www.luwisomo.org)



Rev 4/2007